

062619

RECEIVED

LARAMIE COUNTY  
CHEYENNE, WY.

South 1/4 corner Section 21 T18N R64W

CERTIFIED LAND CORNER RECORDATION

09 OCT 5 PM 3 00

DESCRIPTION OF CORNER EVIDENCE FOUND, AND ORIGINAL RECORD (If known)

Found no evidence of the original GLO corner or any resurvey. The original call was a 14x10x8 sandstone. Called the corner lost and reset by single prorate method.

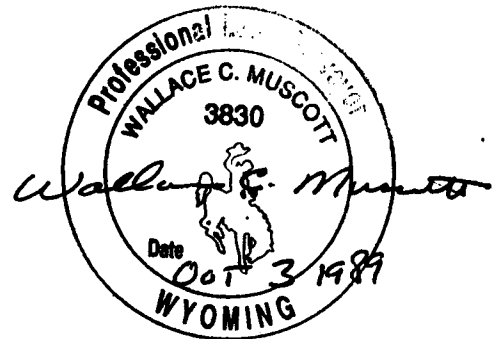
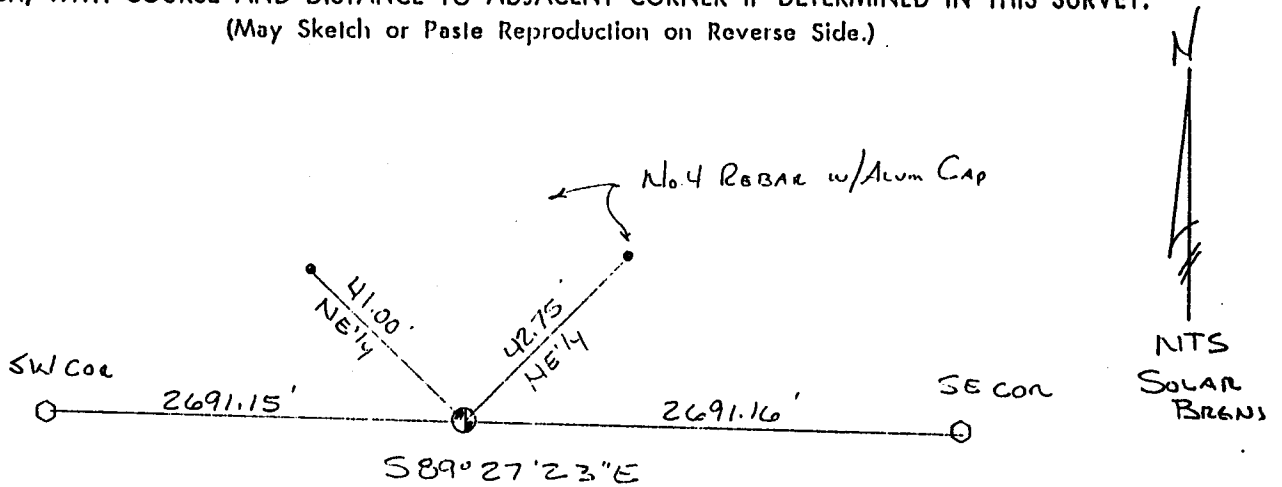
DESCRIPTION OF MONUMENT AND ACCESSORIES ESTABLISHED TO PERPETUATE THE ORIGINAL LOCATION OF THIS CORNER:

Set a No5 rebar 30" long with a Corps of Engineers Brass Cap at the single prorate location of the corner. Set No4 rebar with 1 1/2" aluminum cap Ref Mon as shown in the sketch below.

AUG 23 1989

SKETCH, WITH COURSE AND DISTANCE TO ADJACENT CORNER IF DETERMINED IN THIS SURVEY.

(May Sketch or Paste Reproduction on Reverse Side.)



I, Wallace C. Muscott certify that I have carefully performed or reviewed the work done on the diagrammed corner as reported on this recordation form and approve the same.

Wallace C. Muscott 3830  
Signature of Surveyor Registration No.

STATE OF WYOMING,  
Office of Clerk and Recorder,  
County of \_\_\_\_\_

This "corner record" was filed for record on the \_\_\_\_\_ day of \_\_\_\_\_, 19\_\_\_\_, was noted on the cross-index plat and is assigned page No. \_\_\_\_\_, in book No. \_\_\_\_\_.

County Official			
Cross Index No. <u>R 11</u>	<u>T. 18N</u>	<u>R. 64W</u>	<u>6th Mer.</u>
_____	T. _____	R. _____	Mer.
_____	T. _____	R. _____	Mer.
_____	T. _____	R. _____	Mer.
_____	T. _____	R. _____	Mer.
_____	T. _____	R. _____	Mer.
_____	T. _____	R. _____	Mer.